

TacBar

Tactile Indicator
Stainless Steel Hounds Teeth Directional Bars

The TacBar Stainless Steel Hounds Teeth Directional Bars are one-piece stainless-steel construction and have been designed for safety and dignity, whilst providing superior durability in all substrates. The outer 316 Marine Grade Stainless Steel is used to resist corrosion or rust.

The rear fixing stems allow for easy application to most substrates in multiple high usage environments.

Standards

The TacBar Stainless Steel Hounds Teeth Directional Bars comply and exceed the requirements of:

AS/NZS 1428.4.1:2009
NZTA RTS14
NZS 4121:2001
AS/NZS 3661.1.1993
AS/NZS 4586:2004

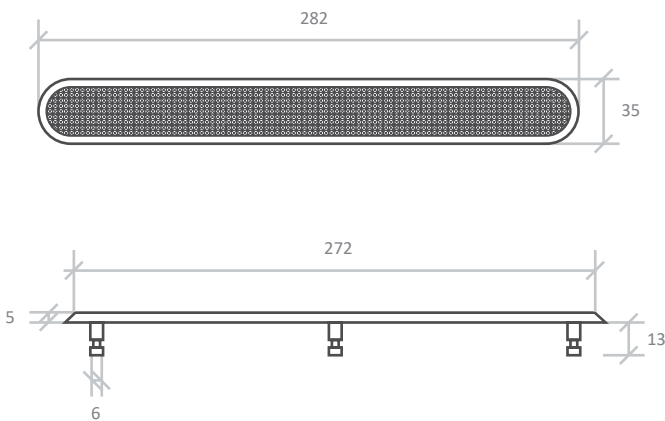
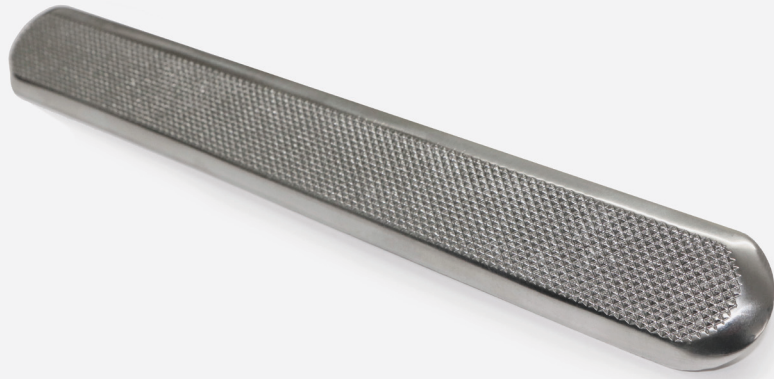
Types & Applications

- TDBSSTLHTFN - 285mm strip with 3 fixing stems epoxy fitted into 8mm holes in Concrete, Timber, Pavers, Tile, Stone Paver & Asphalt Substrates.

Features

- Excellent Anti-Slip Rating
- Easy retro fit install
- 316 Marine Grade Stainless Steel
- Superb abrasion qualities

Tactile Colours: Stainless Steel



5 Year
Warranty

P5 High Slip
Resistance
Stair Nosings
1.81 COF Slip Resistance

AS/NZS
Compliant

