

Staymark

Staymark Tactile Tape



Product Specs

- Easy retro fit install
- UV Stable
- Superb abrasion qualities
- Highly reflective

Composition & Features

The Staymark Tactile Tape is a hard wearing, pre-formed structured patterned tape with abrasion-resistant ceramic beads covered by a very durable polyurethane topcoat.

The retrofit design adhered down with a butyl adhesive contact tape means for quick and easy installation. Designed to removal from surfaces also with no damage or scars to asphalt & concrete substrates.

Standards

The TacBar Stainless Steel Hounds Teeth Directional Bars comply and exceed the requirements of:

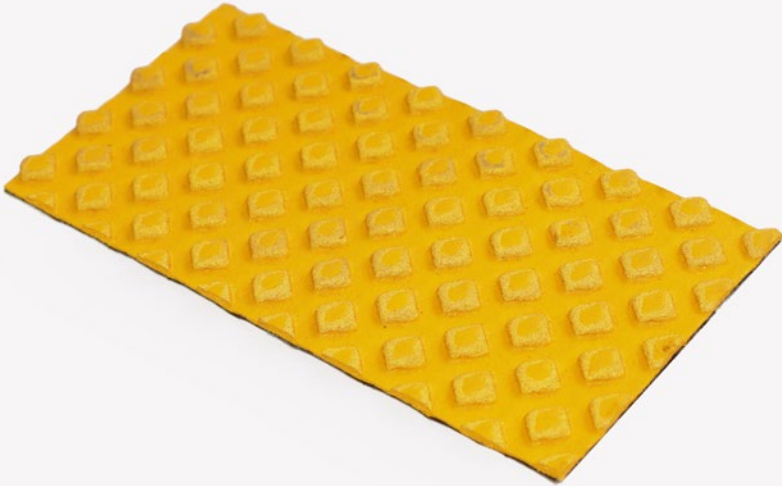
- AS/NZS 1428.4.1:2009
- NZTA RTS14

Types & Applications

- STMRKTP152MM - 152mm wide tape with adhesive backing for Concrete, Asphalt, Tile, Stone Paver substrates.

Colours

Yellow, White



www.cmtgroup.co.nz Phone. 0800 147 433 Facsimile. 03 579 6337 Email. info@cmtgroup.co.nz

NZ Head Office. 12 Taylor Pass Road, Witherlea, Blenheim 7201

Auckland Depot. 62 Tidal Road, Mangere, Auckland 2022

Christchurch Depot. 101 Sturrocks Road, Casebrook, Christchurch 8051