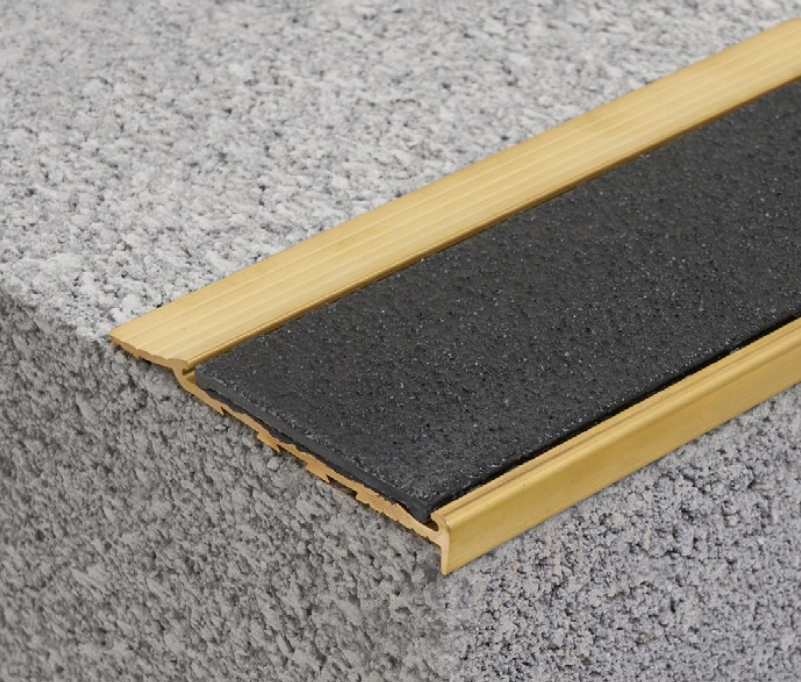


# DKR104-H

Solid Brass Safety Stair Nosing for Surface Mount Applications



Popular, proven and endorsed, this range is now available in solid brass, with a stair nosing option to suit any type of application. With its rich, lustrous golden hue, brass effortlessly creates an immediate focal point in any building. Easy on the eyes and practical, our solid brass stair nosings age gracefully. Ideal for retro-fitting as well as fitting to new staircases, the Solid Brass is suitable for interior and exterior environments for increased safety and enhanced aesthetics.

## Specification Guide

Install DKR104-H safety stair nosings, anodised aluminium with slip-resistant inserts, to stairs as required in accordance with manufacturer's recommendations and the requirements of NZS 4121 and AS/NZS 1428.4.1-2009. Available from: Total Tactilez, 0800 822 845, info@totaltactilez.co.nz

## Features

- Premium solid brass
- Grit insert
- Ramped back, short raked front, pre-drilled and countersunk
- Interior and exterior use

## Application:

Surface mount

## Length:

5850mm  
(Cut-to-length service available)

## Insert Colours: Black, Yellow, Mid Grey, Luminescent



## Aluminium Colours: Natural brass

